

M O D E R N E A R T H S C I E N C E

Section 3.3

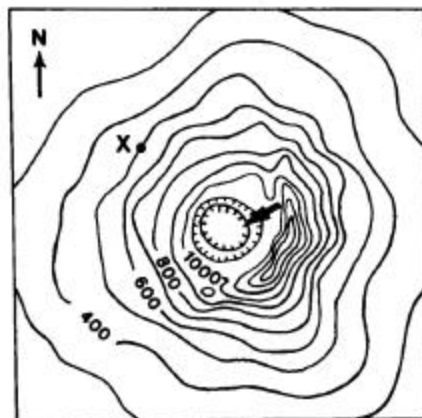
Topographic Maps

Read each statement below. If the statement is true, write *T* in the space provided. If the statement is false, write *F* in the space provided.

- _____ 1. On topographic maps, contour lines connect points having the same elevation.
- _____ 2. Topographic maps show only natural features of an area.
- _____ 3. Eastern and western boundaries of U.S.G.S. maps are indicated by meridians of longitude.
- _____ 4. Index contours are contour lines that are printed bolder in order to make map reading easier.
- _____ 5. A 15' topographic map shows more detail than a 7.5' map of the same area.

Choose the one best response. Write the letter of that choice in the space provided.

- _____ 6. On a topographic map, rapid increases in elevation are represented by:
- a. depression contours
 - b. V-shaped contour lines.
 - c. contour lines forming closed loops.
 - d. closely spaced contour lines.
- _____ 7. The elevation difference between two contour lines on a map is called the:
- a. map scale.
 - b. contour interval.
 - c. map projection.
 - d. index contour.
- _____ 8. Contour intervals are most likely to be smallest on maps of:
- a. hilly areas.
 - b. flat areas.
 - c. high-altitude areas.
 - d. low-altitude areas.



- _____ 9. At what elevation is the point labeled X on the map?
- a. 400 m
 - b. 450 m
 - c. 500 m
 - d. 600 m
- _____ 10. Which feature is indicated by the arrow?
- a. peak
 - b. valley
 - c. stream
 - d. depression