

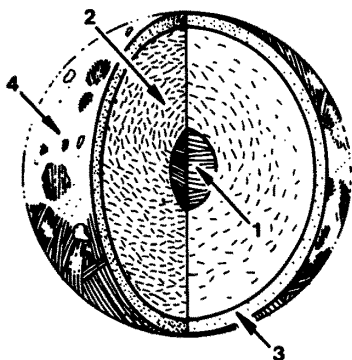
M O D E R N E A R T H S C I E N C E

Section 30.1

The Earth's Moon

Choose the one best response. Write the letter of that choice in the space provided.

- _____ 1. The earth's first artificial satellite was called:
a. *Sputnik 1.* b. *Explorer 1.* c. *Voyager 1.* d. *Apollo 13*
- _____ 2. A long, deep channel on the moon is called a:
a. mare. b. ray. c. streak. d. rille.
- _____ 3. What are bowl-shaped lunar depressions called?
a. breccia b. craters c. anorthosites d. basalts
- _____ 4. The outer layer of dust and small rock fragments on the moon is called:
a. maria. b. umbra. c. rille. d. regolith.
- _____ 5. The moon may have a small liquid core made of:
a. silicon. b. magnesium. c. iron. d. aluminum.
- _____ 6. During which stage of the moon's development was the surface covered with hot, molten rock?
a. first b. second c. third d. last
- _____ 7. The light-colored, coarse-grained rocks from the lunar highlands are called:
a. anorthosites. b. breccia. c. basalts. d. maria.



- _____ 8. In this diagram, the moon's mantle is the structure labeled:
a. 1. b. 2.
c. 3. d. 4.
- _____ 9. According to the giant-impact hypothesis, the moon was once part of:
a. Mercury. b. Venus. c. Earth. d. Mars.

Read the statement and answer it in the space provided.

10. Describe the stage of the moon's development that began when its surface cooled.
