

**M O D E R N E A R T H S C I E N C E**

## Section 29.2

**The Inner Planets**

Choose the one best response. Write the letter of that choice in the space provided.

\_\_\_\_\_ 1. The atmosphere of Venus is 96 percent:

- a. sulfuric acid.
- b. oxygen.
- c. carbon dioxide.
- d. nitrogen.

\_\_\_\_\_ 2. The presence of a magnetic field indicates that a planet may have:

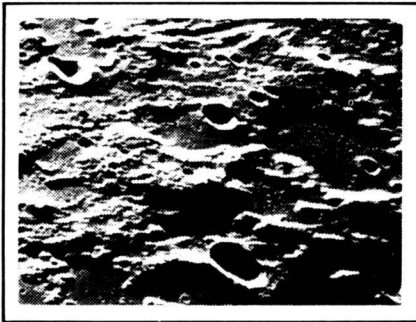
- a. an iron core.
- b. an atmosphere.
- c. oceans.
- d. a high surface temperature.

\_\_\_\_\_ 3. Earth is the only planet in the solar system that has:

- a. clouds.
- b. oceans of water.
- c. a core.
- d. an atmosphere.

\_\_\_\_\_ 4. Great cracks in the crust of Mars were probably formed by:

- a. erosion.
- b. ice caps.
- c. meteoroids.
- d. fault zones.



\_\_\_\_\_ 5. In this photograph, the circular features on the planet's surface are:

- a. ocean basins.
- b. valleys.
- c. impact craters.
- d. volcanoes.

Complete each statement by writing the correct term or phrase in the space provided.

- 6. The inner planets are sometimes called \_\_\_\_\_ .
- 7. The name of the planet closest to the sun is \_\_\_\_\_ .
- 8. Almost all of the visible water on Mars appears to be trapped in \_\_\_\_\_ .
- 9. The major evidence of geologic activity on Mars is the presence of \_\_\_\_\_ .
- 10. The third planet from the sun is \_\_\_\_\_ .